

LIMITED WARRANTY AND PRODUCT INFORMATION

Your eyemodule™ digital camera is covered by the following warranty and return policies. The complete Limited Warranty can be found on your CD.

Register Your eyemodule Digital Camera: Please register your product with us by visiting our Web site at www.eyemodule.com. You can contact us, and obtain the latest information about troubleshooting your eyemodule digital camera, and about your warranty, on our Web site.

General Repairs: Most problems with your eyemodule digital camera can be easily solved with the help of online technical support. Please visit our Web site, www.eyemodule.com, to find answers to frequently asked questions (FAQs). If you still need help, please email questions to support@eyemodule.com, or call Technical Support at 650-322-1776. Opening your eyemodule digital camera, making unauthorized repairs, may void your warranty. See the complete Limited Warranty for details.

Overview of Limited Warranty: Blocks Products ("Blocks") warrants to the original end user that this product will be free from defects in workmanship and materials, under normal intended use, for one year from the date of original purchase from Blocks. Subject to the terms and conditions of the Limited Warranty, Blocks shall replace the defective product with a comparable product, repair the product, or refund the purchase price paid for the product. The Limited Warranty does not cover any malfunction or damage caused by misuse, neglect, improper installation or testing, unauthorized attempts to open, repair, or modify the product, or any other cause beyond the range of the intended use, by any malfunction in any device to which it is connected, or by accident, fire, lightning, extreme conditions, other hazards, or acts of God. The Limited Warranty also does not cover physical damage to the surface of the product, including cracks or scratches on the lens or outside casing. For details of coverage and exclusions, and the procedures for obtaining warranty service, see the complete Limited Warranty on the CD or our Web site.

Return Policy: If, within 30 days from the date of purchase, you are not completely satisfied with the product for any reason, you may return the product to the place of purchase for a full refund. *Please note: In order to receive a refund, the product must be returned in the original package along with the sales receipt that shows the purchase price and the date of purchase.*

Unit Damaged In Shipping: If your product was damaged during shipment, please contact our Customer Care Center at 650-322-1776.

Note: This equipment has been tested and found to comply with the limits for a Class B digital device, pursuant to part 15 of the FCC.

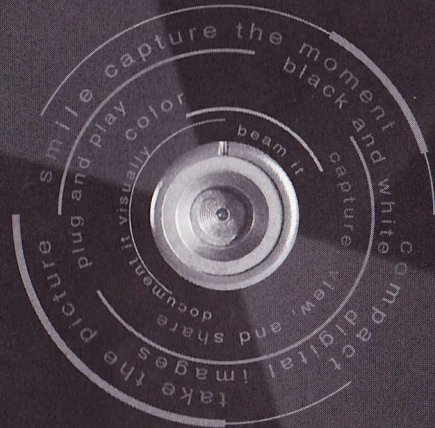
Rules: These limits are designed to provide reasonable protection against harmful interference in a residential installation. This equipment generates, uses and can radiate radio frequency energy and, if not installed and used in accordance with the instructions, may cause harmful interference to radio communications. However, there is no guarantee that interference will not occur in a particular installation. If this equipment does cause harmful interference to radio or television reception, which can be determined by turning the equipment off and on, the user is encouraged to try to correct the interference by one or more of the following measures:

- Reorient or relocate the receiving antenna.
- Increase the separation between the equipment and receiver.
- Connect the equipment into an outlet on a circuit different from that to which the receiver is connected.
- Consult the dealer or an experienced radio/TV technician for help.

www.eyemodule.com

eyemodule™

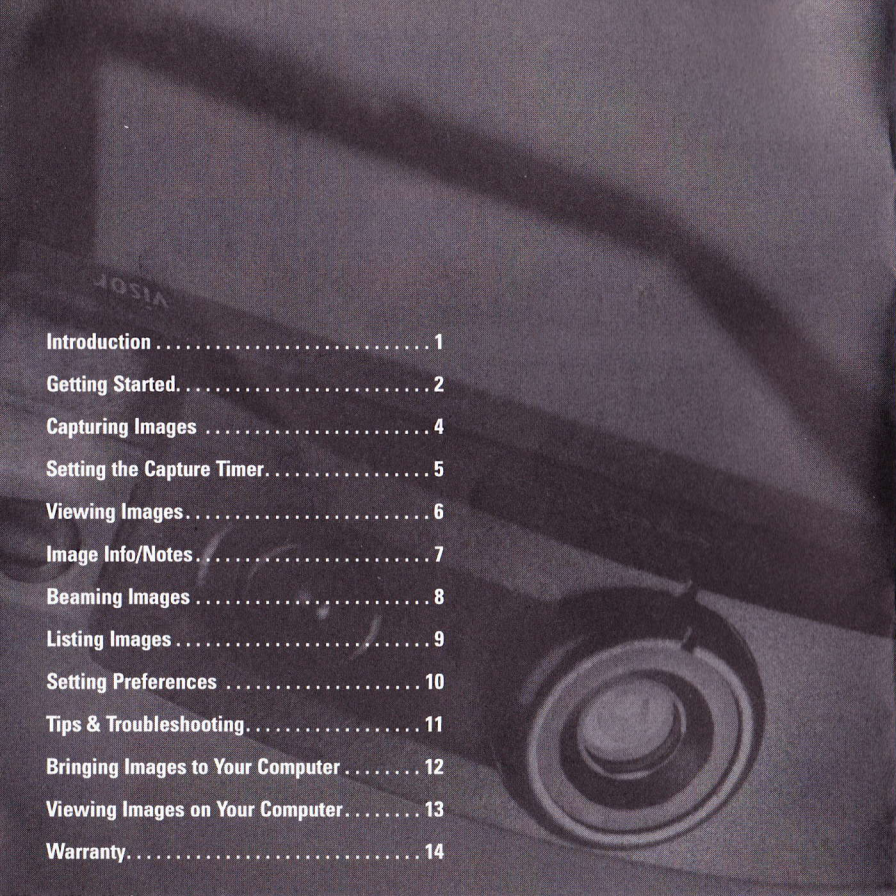
Turn your Handspring™ Visor™ handheld into a digital camera



introduction

The eyemodule™ digital camera turns your Handspring™ Visor™ handheld into a convenient image capture device.

Snap the eyemodule digital camera into the Springboard™ expansion slot and you're ready to capture and view images, label them, and beam them to other PalmOS® devices. Install the included conduit software and you can email and print your eyemodule images from your computer. It's fast and simple.

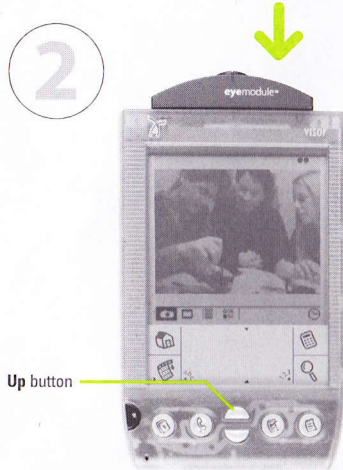


Introduction	1
Getting Started	2
Capturing Images	4
Setting the Capture Timer	5
Viewing Images	6
Image Info/Notes	7
Beaming Images	8
Listing Images	9
Setting Preferences	10
Tips & Troubleshooting	11
Bringing Images to Your Computer	12
Viewing Images on Your Computer	13
Warranty	14

getting started



Insert the eyemodule digital camera into the Springboard expansion slot. After a brief introductory screen, your handheld will display a live image.



To freeze an image, press the **Capture** button next to the lens once. (You may also press the **Up** button on the Visor handheld to perform the same function.)



If you want to save the frozen image, press the **Capture** (or **Up**) button again. If you don't want to save it, press the **Down** button. Your handheld will again display a live image.



capturing images

When the **Capture** icon is selected, you are ready to capture images.

Press here to capture an image.

Tap here to change the current image capture format:

- One dot indicates small black & white
- Two dots indicate large black & white
- Three dots indicate large color

The image format can also be changed in **Preferences** (page 10).

Capture icon.

Tap here to hide or show icons.

Tap here to set the **Capture Timer**.

You can also press the **Up** button to capture an image.

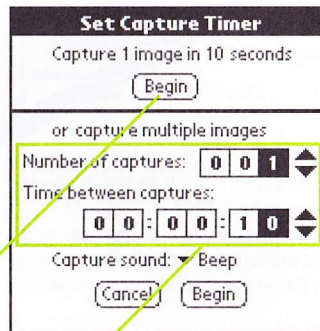


setting the capture timer

The **Capture Timer** gives you two ways to capture timed images. In addition to the familiar ten-second self-timer, the eyemodule digital camera gives you a way to capture a series of images. This allows you to create your own time-lapse photography.

Tap here to capture one image after a ten second pause.

Change these numbers to set up your own image-capture sequence. The eyemodule digital camera will turn the Visor handheld back on if the time between captures exceeds Visor Auto-off time. (If your Visor handheld runs out of memory during the sequence, the eyemodule digital camera will stop taking images.)



viewing images

When the **View Image** icon is selected, you will be able to view saved images.

Tap the **Zoom** icon or directly on the displayed image to zoom in on it. Drag the stylus on the image to pan across it. Tap the **Zoom** icon or the image again to zoom back out. **Zoom** applies to large black & white and color image formats only.

View Image icon.

Tap the **Info** icon to bring up the **Image Info** window (page 7).

Tap here to hide or show icons.

Tap the **Beam** icon to beam the current image to another PalmOS® device (page 8).

Tap the **Delete** icon to delete the current image.

6 Press the scroll buttons to view the next or previous image.

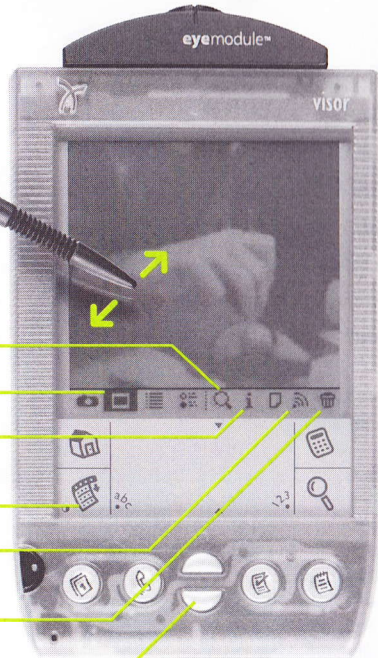


image info/notes

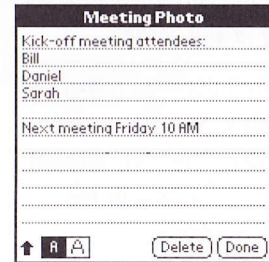
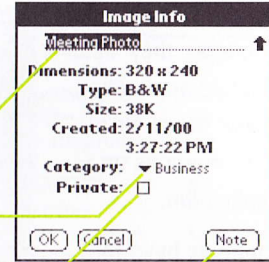
Tapping on the **Info** icon from the **View Image** screen will send you to the **Image Details** window.

You can change the image name when it is highlighted.

Tap here to set image category.

Tap here to set privacy.


Tap here to attach a note to the current image.



beaming images

Before other PalmOS devices can view your images, they must have the eyemodule application installed. See your handheld's user guide for instructions on beaming an application.

Once both handhelds have the eyemodule application installed, you can beam the current image from the **View Image** screen.

Align the infrared ports as shown and tap the **Beam** icon  to begin transmission. Keep the ports aligned until beaming is complete, or tap **Cancel** to stop the transfer.



listing images

When the **Image List** icon is selected, you will be able to view a list of images.


Tap here to change the current category.

Tap an image name to view that image.

Image List icon.

Tap here to view an attached note.

Image List		Business
High Street	Color	187K
New building	B&W	37K
Parking spaces	Color	187K
Lobby 660	B&W	37K
Meeting room	B&W	9K
Doors of 777	B&W	9K
Front of 831	B&W	37K
Vendors	B&W	37K
Strategic map	Color	187K
Meeting Photo	B&W	37K
Product plan	B&W	37K
Prototypes	B&W	9K

Note: You can delete an entire category of images by tapping the **Menu** icon  and selecting **Delete Images** under **Options**.

setting preferences

When the **Preferences** icon is selected, you will be able to edit your preferences.

Tap here to change the format of images being captured.

Tap here to change the capture sound.

Tap here to change the capture category.

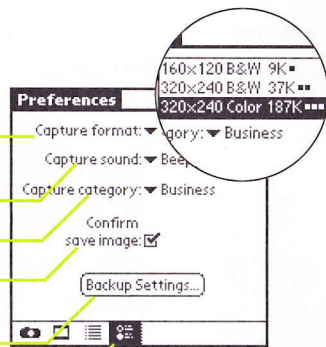
Selecting this gives you the option to view the image before saving.

Tap here to change the back up settings.

Preferences icon.

By default, all images will be backed up on HotSync® operation. (See page 12 for more details.)

If your handheld's data gets lost, you can restore all your backed up images upon HotSync operation. You should restore your lost images before capturing new ones.



tips & troubleshooting

- Hold the Visor handheld as still as possible while taking the picture.
- Make sure the lighting around your subjects is adequate. Don't backlight your subjects.
- Adjust your contrast level correctly.
- Before you start capturing images, set your Capture Category in Preferences.
- To conserve the memory on your Visor handheld, select one of the two B&W formats. If you plan to bring color images to your computer, select the color image format.
- Expect backing up images to extend your HotSync time. You can minimize this by removing larger sized images.
- You can use the Up/Down buttons to freeze images and confirm saving them.
- To be ready to capture images at any time, press the Capture button on the eyemodule digital camera (see page 4).

- If the eyemodule digital camera doesn't work:
- Be sure the eyemodule digital camera is fully inserted.
 - Be sure the Visor handheld is working properly.
 - Refer to the Visor handheld user guide.

For further assistance:
URL: www.eyemodule.com
Email: support@eyemodule.com
Call: 650-322-1776

bringing images to your computer

First, be sure that the Visor HotSync operation functions properly.

To place images on your computer, you must first use the enclosed CD to install the conduit software on your computer:

1. Locate the enclosed CD and insert it into the computer's CD-ROM drive.
2. The eyemodule conduit install application will launch automatically.

Please follow the instructions.

After the conduit is installed, you can place your handheld in the cradle and push the HotSync button.



The eyemodule images will be transferred to the computer, converted into JPEG files, and placed in the folder that was specified during the conduit installation process. (JPEG is a popular image format that can be read by many applications.)

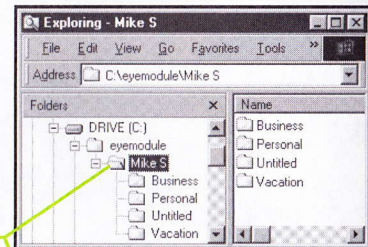
The conduit does not bring JPEG images from your computer to your handheld.

viewing images on your computer

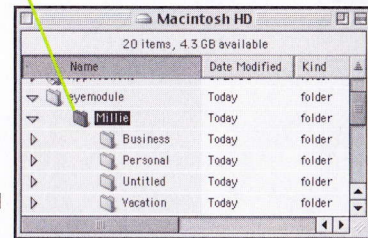
Once the JPEG image files are placed on your computer, you can find them in the folder named "eyemodule" that is placed in your hard drive's top level during installation. The image files will be arranged in subfolders named directly after the categories on your handheld.

For your convenience, we have included optional third-party software on the eyemodule CD which will allow you to view and print your image files.

See enclosed card for instructions on installing and using the included third-party image viewing software. The JPEG images files can also be viewed individually on your computer using your Web browser or any other software that views image files.



Windows® Explorer



Mac® Finder